



**Inclusive Housing Project
for Lesbians and
Queer Socio-Cultural Centre
in Berlin-Mitte**



2 Inclusive RuT Lesbian Housing Project and Queer Socio-Cultural Centre Intergenerational and self-determined living and housing for lesbians in Berlin

RuT – Rad und Tat Berlin gGmbH was founded in 2011 as the organisation responsible for the planned housing project. RuT gGmbH is a subsidiary of the registered not-for-profit association Rad und Tat – Offene Initiative Lesbischer Frauen e.V.

Publisher:

RuT – Rad und Tat Berlin gGmbH

Housing Project Office

Friedbergstraße 20

14057 Berlin

wohnprojekt@rut-wohnen.de

www.rut-wohnen.de

A film about the housing and cultural project can also be found on the website.

The association was founded in 1989 by a group of older, non-able-bodied lesbian women in Berlin-Neukölln. It is one of the key advisory and cultural organisations among the landscape of projects in the Berlin community (www.rut-berlin.de).

Date: November 2023

Editorial: RuT – Rad und Tat Berlin gGmbH

Translation: Sonja Hornung

Design: egge freygang, Berlin

Illustrations of building + floor plans: GALANDI SCHIRMER
ARCHITEKTEN + INGENIEURE GMBH

Photos: Brigitte Dummer, Leo Wegener

Funded by the Department for Equal Treatment and Against Discrimination – Berlin Senate
Department for Labour, Social Services, Gender Equality, Integration, Diversity and Anti-Discrimination



Senate Department
for Labour, Social Services, Gender Equality,
Integration, Diversity and Anti-Discrimination

BERLIN



Culture, Community, and Housing – All Under One Roof

A living centre for lesbians – in all their diversity – in the heart of Berlin

OUR HOUSE is a pilot project for all of Europe: a place for housing, living in community, and enjoying life – for growing old while staying young at heart. A place for learning, community, and culture. A place for solidarity and for the neighbourhood. For, by, and with lesbians – in all their diversity.

Gender Equality in Berlin-Mitte through self-determined living and housing that is free of discrimination for queer women and lesbians: a symbol for women's participation

Housing means Space – from autumn of 2025, the centrally located, new building with green spaces for all will be ready: 72 affordable, for the most part easily accessible flats, five of which are wheelchair-accessible, and half of which are subsidised (WBS)

CommunityHealth through a flat share for queer women and lesbians with special care needs, as well as

health-oriented workshops – the housing project as a **Centre of Expertise** for the care and elderly queers

SharedSpaces – together in the metropolis, becoming active in the city – and keeping it like that!

NeighbourhoodCafé as an open meeting-point and with it, a queer, inclusive **Socio-CulturalCentre** – both open from autumn 2025 for the housing community, the neighbourhood, and queer communities for cultural and social events – as well as for initiatives who want to use the space

Onsite Advisory Service and Support and Visitor Service
"Time for You"

Professional and Educational Events, Information, and Networking by and for queer women and lesbians



* Cemetery site of the SAPHO Foundation "LesFriedA Berlin" at the Georgen Parochial Cemetery I



Building Site Berolinastraße

The RuT Lesbian Housing Project – Living, Housing, Culture, and Community in Berlin-Mitte

Directly next to the Berlin-Mitte Town Hall and “Kino International”, and located adjacent to number 9, Berolinastraße, the seven-floor new building is a short distance from the underground station “Schillingstraße” (U5 line), which is wheelchair-accessible.

Located in the heart of Berlin, Berolinastraße is a quiet housing street without through-traffic.

The newly constructed RuT housing and socio-cultural centre offers unimpeded views of the Berlin TV Tower and is located not far from Alexanderplatz, with good connections to underground and subway trains, trams, buses, and regional transport.

In front of the building is an open green space with raised garden beds and an intergenerational area for playing and sport – open for all to use.

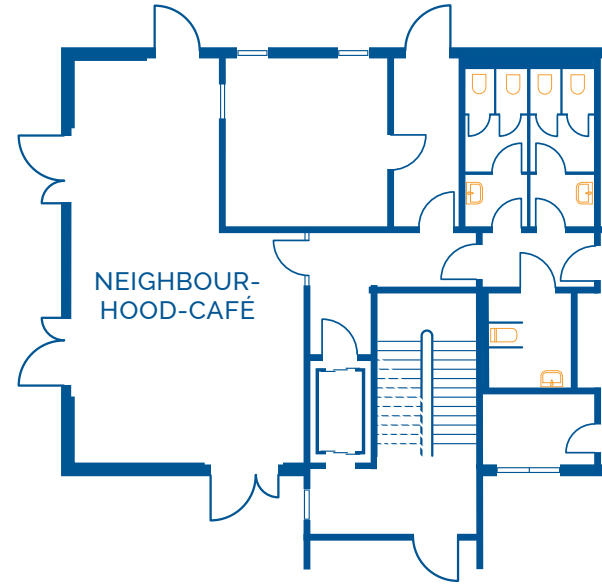


Stronger together! – Participation and Co-Organisation in One Building

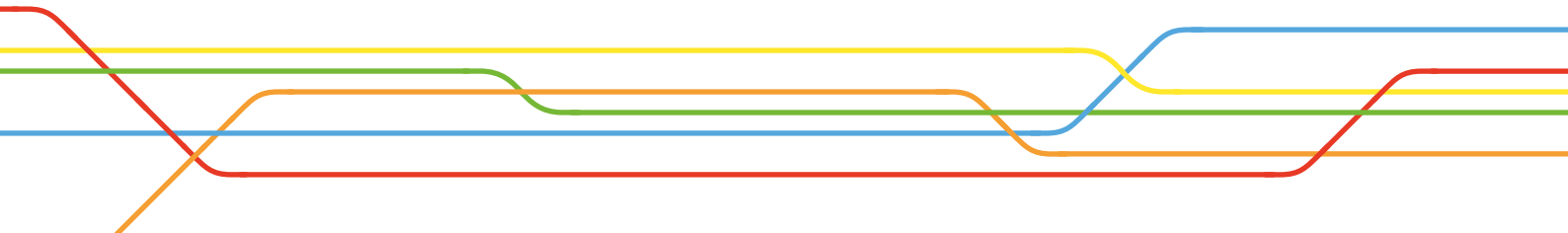
A place for being together in solidarity – a model for a society built on the principle of solidarity

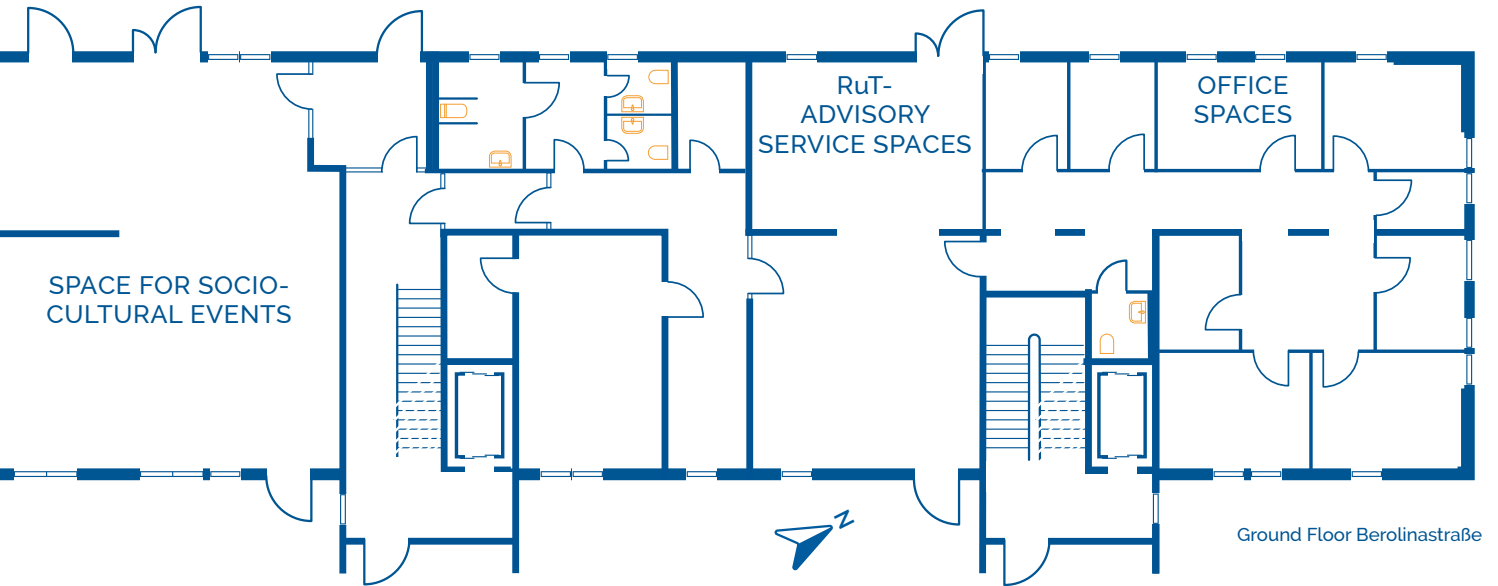
Self-determined and discrimination-free co-existence, participation, and a fulfilling life are all made possible for elderly queer women and lesbians in a comprehensive centre that connects housing, care, advisory services, and health education, as well as culture and life-long learning.

The building contains a queer Socio-Cultural Centre that will open out to the entire neighbourhood and the municipality of Berlin-Mitte. Inclusion, self-organisation, and cultural participation are central values. Singing – including in old age. Dancing – also if non-able-bodied. Theatre – in sign language, too. Exhibitions that can also be touched. The core focus lies on the ideas and initiatives coming from the housing community, with the support of cultural offers from LGBTQI+ communities.



Among other activities, a (lesbian) choir is planned, as well as theatre groups, intercultural storytelling cafés, (DIY) concerts, dance events, games afternoons, readings, lectures and workshops, (book)swaps, excursions, hikes, and urban walks.

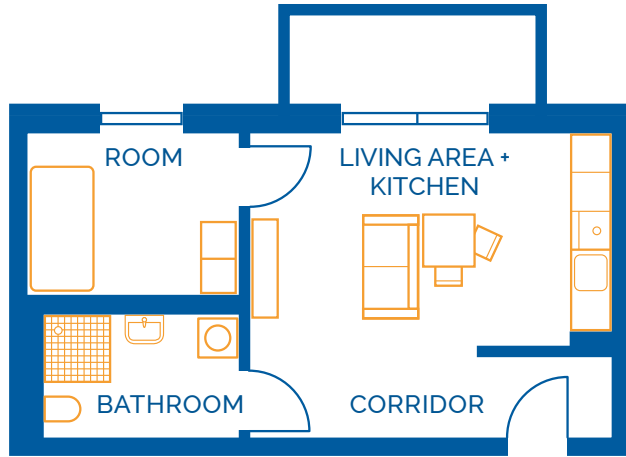




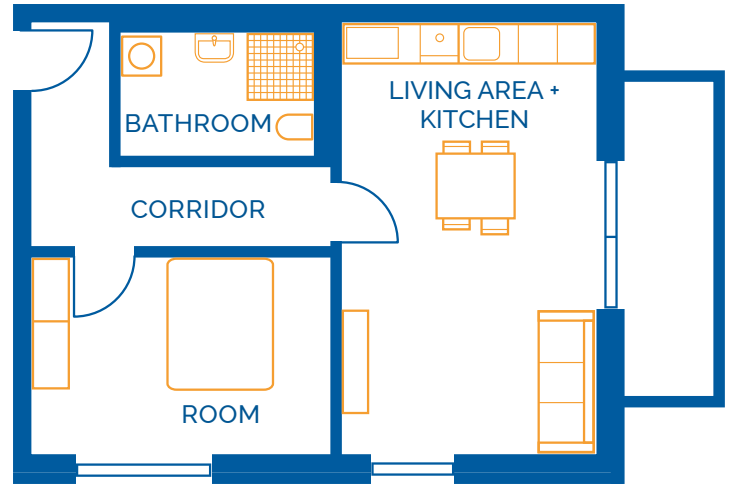
A multi-functional space for events, including a dance floor and a **Neighbourhood-Café**, are all available for the housing community, the neighbourhood, Berlin LGBTQI+ communities, and regional and international art and cultural projects.

Art, music, and dance events, as well as educational and professional conferences, health education-oriented activities and more – all find their place here.

Guidance and support will take place onsite in adjacent spaces on the ground floor.



1.5-room flat approx. 46 m²



2-room flat approx. 57 m²



Space for Housing, Space for Living

An inclusive place forms, one where women who love other women can live together in solidarity, in a housing community for women/lesbians.

Almost all flats are designed to be as accessible as possible. Some are wheelchair-accessible, some contain beautiful balconies. The rental costs will remain affordable, and half of the flats are subsidised through the German WBS social housing programme.

All flats contain between one to four rooms.

Interested in these new LivingSpaces?
Contact us:
wohnungsbewerbung@rut-wohnen.de

The **application form** (currently only in German) can be found on our website:
rut-wohnen.de/unser-haus/um-eine-wohnung-bewerben




Housing Community for Lesbians with Special Care Needs

Accessible flats allow for outpatient care to take place onsite, even in the case of illness. The housing community additionally includes a flat share containing eight rooms for women who have recognised special care needs. This flat is located on the first floor, and can easily be accessed by lift from all staircases.

Our concept – to incorporate the provision of care in the building – makes it possible to remain self-determined and stay as independent as possible, in the same home and in a trusted environment, including to the very end of one's life.

We support feminist, queer-sensitive care services in the building that respect lesbians by taking into account the following aspects:

- ◆ basic knowledge of women's and lesbian herstories, as well as knowledge of the herstories of the feminist women's movements,
 - ◆ basic knowledge of the key factors and role models that have influenced older generations of lesbians,
 - ◆ recognition that each individual biography is shaped by different experiences,
 - ◆ care services that know just how important autonomy and independence are, particularly for this generation of women,
 - ◆ care services that are aware of the repercussions of discrimination against women, including physical and sexual violence against women, and
 - ◆ care services that are aware of structural gender inequalities.
- 
- A decorative graphic at the bottom of the page consists of several horizontal lines in various colors (green, orange, purple, yellow, red) that are mostly straight but feature some wavy, undulating sections, particularly on the right side.

The Inclusive RuT Housing Project and Queer Centre is realised by Rad und Tat Berlin gGmbH in cooperation with the Wohnungsbaugesellschaft Berlin-Mitte mbH WBM

The construction, legal, and planning aspects for the cooperation were established in an intensive planning process that involved working in close dialogue. Both cooperation partners are working together on a blueprint model for future housing projects.



RuT
rut-wohnen.de

WBM.
Wohnungsbaugesellschaft
Berlin-Mitte mbH

Help us to realise this pilot project, which is unique in Europe, with your donation



Account for Donations

SozialBank

Account Name: Rad und Tat Berlin gGmbH

IBAN: DE57 3702 0500 0001 3573 00

BIC: BFSWDE33XXX

Reference: Spende für RuT-Wohnprojekt

RuT – Rad und Tat Berlin gGmbH

Friedbergstraße 20

14057 Berlin

Telephone: (030) 862 078 56

wohnprojekt@rut-wohnen.de

www.rut-wohnen.de



We are authorised to issue receipts for donations.